

Facades available:

Callington, Eastwood, Harrogate
Kent, Lancaster, Sheffield
Swansea, Wiltshire

Overall home width 13.67m

Overall home length 21.71m

Residence 198.4m² 21.4sq

Garage 36.5m² 3.9sq

Porch 6.0m² 0.6sq

Alfresco 11.2m² 1.2sq

Total 252.1m² 27.1sq

Listed details based on Sheffield facade floorplan (illustrated)

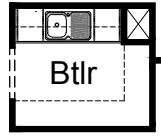
FLOORPLAN OPTIONS

We personalise our floorplans.

Talk to us about our huge range of ready-to-go design options or simply visit www.burbank.com.au/south-australia for more details.

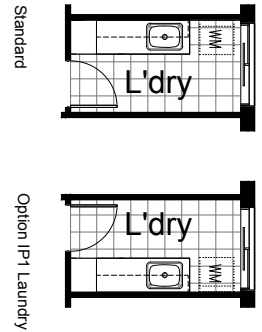
OPTION K1

Provide Butlers pantry upgrade with 32mm laminate bench top and 1no. bowl sink with drainer and tiled splashback to suit. Provide 1no. 900mm base cupboards, 2no. 450mm base cupboards, 2no. 900mm overhead cupboards including 4no. 450mm shelving including returns.



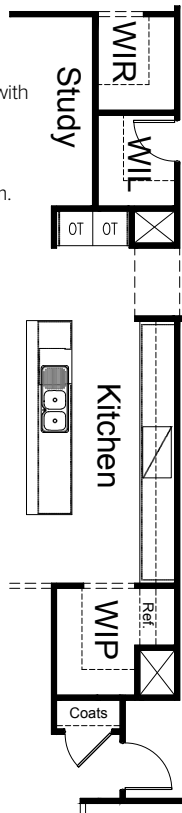
OPTION LD2

Provide Laundry upgrade with laminated insert trough, 1no. 400mm broom cupboard with 2no. 800mm base cupboards and 2no. 800mm overhead cupboards. Additional tiled splash back and bench top to suit. NOTE: Available for both standard house layout and Option IP1 & Option IP3



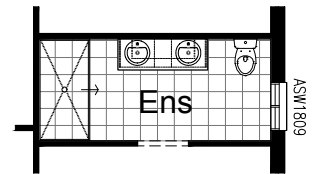
OPTION K2

Provide Kitchen upgrade with 5no. 900mm base cupboards and 2no. wall oven towers with Ref space relocated to WIP. Tiled splashback to suit including returns. Removed MW provision to island bench and replaced with 900mm base cupboard. Provide Coats cupboard to Entry with 450mm hanging rail and shelf. Store becomes WIL with Bed 4 WIR reduced by 350mm.



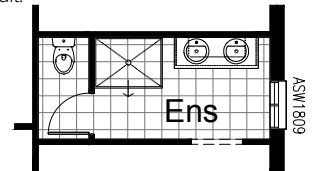
OPTION ENS1

Provide wall to wall tiled shower in Ensuite with 2no. basins to vanity unit.



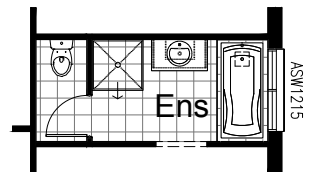
OPTION ENS2

Provide 900mm x1200mm tiled shower in Ensuite. Relocated enclosed WC with 720mm hinged door and 1482mm vanity unit with 2no. basins. Relocate entry opening to suit.



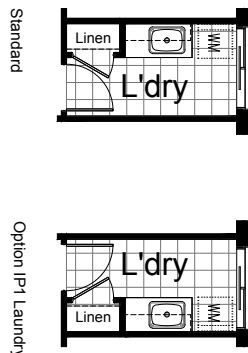
OPTION ENS3

Provide relocated enclosed WC with 720mm hinged door and 982mm vanity unit. Relocate entry opening to suit. Provide 1675 bath with hob and Change window size to 1200mm (H) x 1450mm (W) (ASW1215).



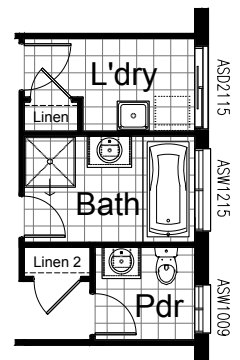
OPTION LD1

Provide Laundry upgrade with laminated insert trough, 1no. 800mm base cupboard, 1no. 300mm base cupboard, 1no. 800mm overhead cupboard, 1no. 300mm overhead cupboard with additional tiled splash back and bench top to suit. NOTE: Available for both standard house layout and Option IP1 & Option IP3



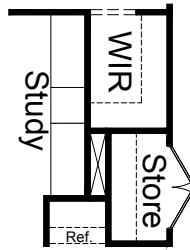
OPTION IP1

Provide alternative layout to Laundry, Bath, WC, & Vest area. Layout includes Powder, Bath, & Laundry. 900mm x 900mm tiled shower base. 1no. 782 vanity unit to Bath and 1no. 682 vanity unit to Powder. Second Linen to passage.



OPTION IP2

Provide built in 2 seat desk option for study with 1no. 600mm drawer unit and 600mm deep 32mm laminate bench top.
NOTE: Available with Option K2 but space is increased in size by 150mm.

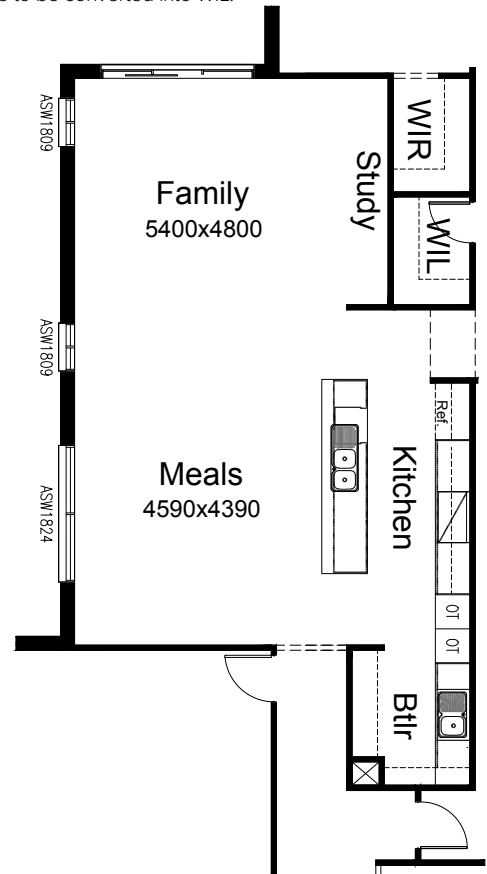
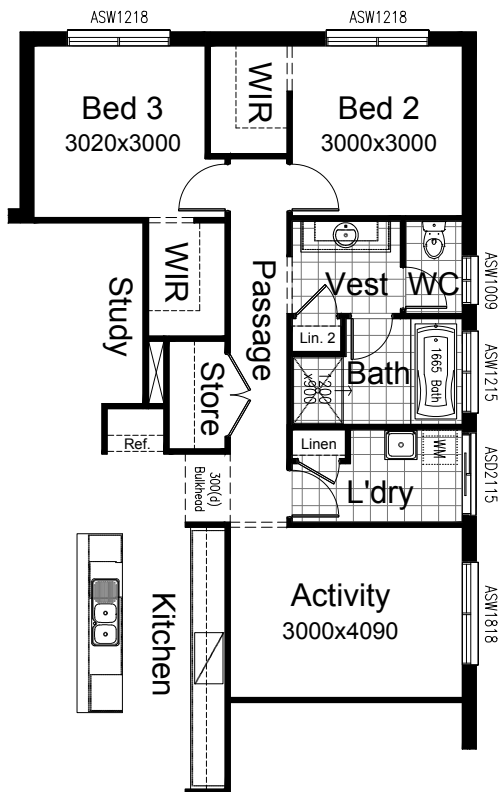


OPTION IP4

Provide Kitchen & Butlers pantry with 2no. 600mm wall oven towers and 4no. 900mm base cupboards.
2no. 900mm overhead cupboards,
1no. 900mm cooktop with retractable rangehood and tiled splashback to suit.
2no. 450mm base cupboards with 1800mm high open adjustable/ fixed shelves and 4no. 450mm shelves.
1no. single bowl sink with drainer and tiled splashback to suit in Butlers. Store to be converted into WIL.

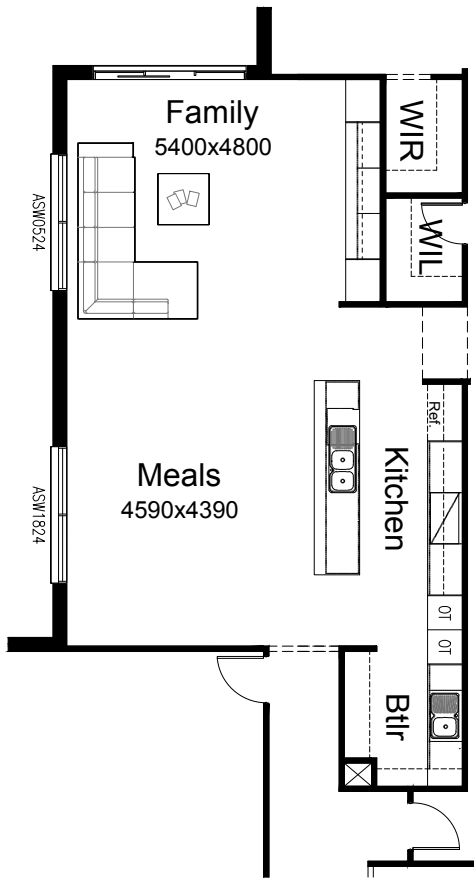
OPTION IP3

Provide alternative layout to make 3 Living areas which turns existing Bed 2 into an Activity room.
Additional Bulkhead to Entry. Change window size to 1800mm (H) x 1810mm (W) (ASW1818).
NOTE: This Option makes the house become 3 Bedrooms instead of standard 4 Bedrooms.



OPTION IIP5

Provide Family room upgrade with
2no. 700mm storage units,
3no. 800mm joinery units with 32mm laminated
benchtop &
3no. overhead joinery units including 1no. cable duct.
WIL is reduced in width by 70mm. Change Family
window size to 514mm (H) x 2410mm (W)
(ASW0524).
NOTE: Only available with Option IP4.
Also this option removes Study Nook.



OPTION IP6

Provide alternate layout with WIP relocated to
opposite side of Kitchen. Relocate Ref Space to
WIP. Provide 32mm laminate benchtop to Kitchen
with 900mm underbench oven and hotplate with
retractable rangehood above. Relocate Study to
Entry and provide additional WIR to Bed 1.
NOTE: This Option reduces Bed 1 by 480mm

